



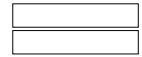
Cells

Design by Speirs + Major





931



Design by Speirs + Major

FR Une gamme d'appareils d'extérieur déclinée dans les versions à encastrer ou de surface adaptées à une installation au plafond ou au mur, en mesure de fournir d'excellentes performances et de s'intégrer harmonieusement dans l'architecture ambiante. Le système de contrôle avancé du faisceau permet de choisir des solutions d'éclairage général ou pour des applications spécifiques.

ES Una serie de aparatos para exterior con modelos de empotrar o de superficie, que pueden instalarse en techos y paredes, con excelente rendimiento y capaz de integrarse perfectamente en el contexto arquitectónico. El avanzado sistema de control del haz de luz permite crear soluciones para la iluminación general o para aplicaciones específicas.

www.reggiani.net

Overview


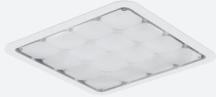


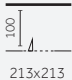
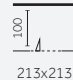


Application:	Recessed, Surface
Light source:	LED ARRAY
Watt:	13 W - 18 W
Kelvin:	3000 K, 4000 K
Lumen:	1631 lm - 2300 lm
CRI:	>80
SDCM:	<3
IP:	66
IK:	10
Control options:	On/Off, Phase-cut, Dimm 1-10V, DALI, Emergency
Technologies:	Bluetooth

Disponibile pour l'Amérique du Nord: rendez-vous sur www.reggianiusa.com/
 Disponible para América del Norte: consulte la página www.reggianiusa.com

#theilluminationcollective

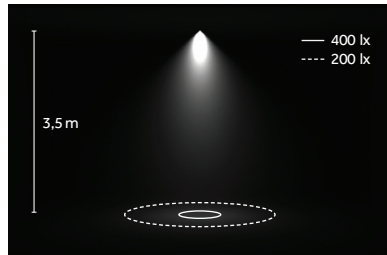
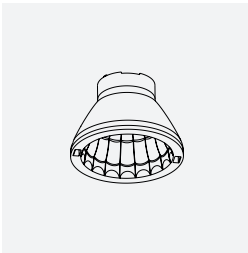


Versions/ Modelos											
Recessed p.945											
Surface p.955											
Diffuseurs/ Difusores											
Finitions/ Acabados											
Plates											
Cells Surface Body											
Cells Recessed Trim											
Faisceaux/ Haces de luz											
	Étroit/ Estrecho	Moyen/ Medio	Large/ Ancho	Très large/ Muy ancho	Rectangulaire / Rectangular	Asymétrique/ Asimétrico	Double, asymétrique/ Doble asimétrico				

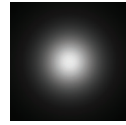
Dimensions et données techniques/ Dimensiones e información técnica		
	Transparent diffuser	Opal diffuser
Cells Recessed Àras/A ras p.945	 <p>Visible trim 232x232mm p.948</p>	 <p>Visible trim 232x232mm p.949</p>
Cells Recessed Saillant/Saliente p.945	 <p>Visible trim 232x232mm p.950</p>	 <p>Visible trim 232x232mm p.951</p>
Encombrement intérieur max/ Dimensiones interiores máximas	 <p>100 213x213</p>	 <p>100 213x213</p>
Cells Surface p.955	 <p>Visible trim 201x201mm p.960</p>	 <p>Visible trim 201x201mm p.961</p>
Ouverture du faisceau lumineux/ Amplitud del haz de luz	9°, 24°, 55°, 68°, Rectangular Asymmetric, Double asymmetric	81°
Source lumineuse/ Fuente luminosa	<p>LED ARRAY 13 W, 18 W 1631 lm-2300 lm L70 B50=50,000h 3000K, 4000K SDCM <3 CRI >80</p> <p>Emergency 3h LED ARRAY 13 W, 18 W 1631 lm-2300 lm L70 B50=50,000h 3000K, 4000K SDCM <3 CRI >80</p>	<p>LED ARRAY 13 W, 18 W 1631 lm-2300 lm L70 B50=50,000h 3000K, 4000K SDCM <3 CRI >80</p> <p>Emergency 3h LED ARRAY 13 W, 18 W 1631 lm-2300 lm L70 B50=50,000h 3000K, 4000K SDCM <3 CRI >80</p>

Accessoires/ Accesorios																				
	<div data-bbox="427 241 612 376"> </div> <p data-bbox="427 443 501 479">Coffrage/ Encofrado</p>																			
Cells Surface	<div data-bbox="427 555 526 613"> </div> <p data-bbox="427 779 501 815">Raccord/ Conector</p> <table data-bbox="427 824 501 913"> <tr><td>48</td></tr> <tr><td>08</td></tr> <tr><td>28</td></tr> <tr><td>98</td></tr> </table>	48	08	28	98	<div data-bbox="676 533 829 658"> </div> <p data-bbox="676 779 877 815">Bride pour l'orientation à 90°/ Estribo para orientación a 90°</p> <table data-bbox="676 824 750 913"> <tr><td>48</td></tr> <tr><td>08</td></tr> <tr><td>28</td></tr> <tr><td>98</td></tr> </table>	48	08	28	98	<div data-bbox="932 533 1085 748"> </div> <p data-bbox="932 779 1171 815">Bride pour l'orientation biaxiale à 90°/ Estribo para doble orientación a 90°</p> <table data-bbox="932 824 1005 913"> <tr><td>48</td></tr> <tr><td>08</td></tr> <tr><td>28</td></tr> <tr><td>98</td></tr> </table>	48	08	28	98	<div data-bbox="1181 533 1299 658"> </div> <p data-bbox="1181 779 1283 815">Pare-lumière/ Visera</p> <table data-bbox="1181 824 1254 913"> <tr><td>48</td></tr> <tr><td>08</td></tr> <tr><td>28</td></tr> <tr><td>98</td></tr> </table>	48	08	28	98
48																				
08																				
28																				
98																				
48																				
08																				
28																				
98																				
48																				
08																				
28																				
98																				
48																				
08																				
28																				
98																				

Round



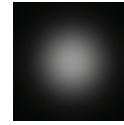
LED: 18 W/24°/4000 K (NN)



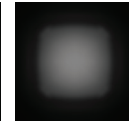
Étroit/
Estrecho
9°



Moyen/
Medio
24°

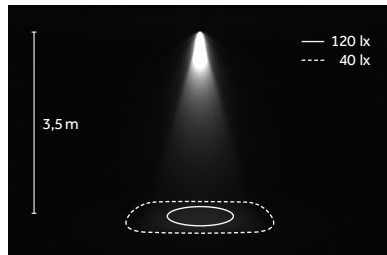
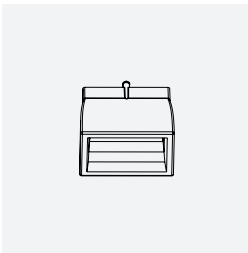


Large/
Ancho
55°

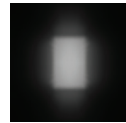


Très large/
Muy ancho
68°, 81°

Rectangular

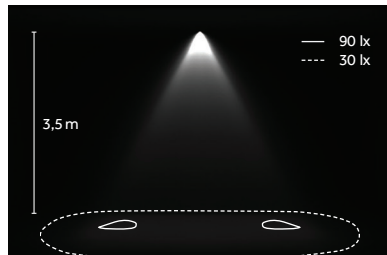
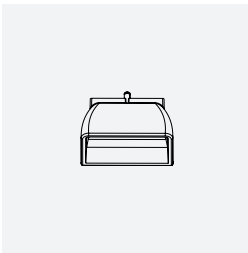


LED: 18 W/Rectangular/4000 K (NN)

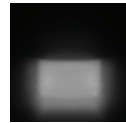


Rectangulaire/
Rectangular

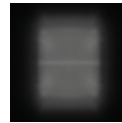
Asymmetric



LED: 18 W/Double asymmetric/4000 K (NN)



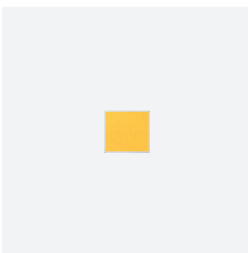
Asymétrique/
Asimétrico



Double,
asymétrique/
Doble
asimétrico

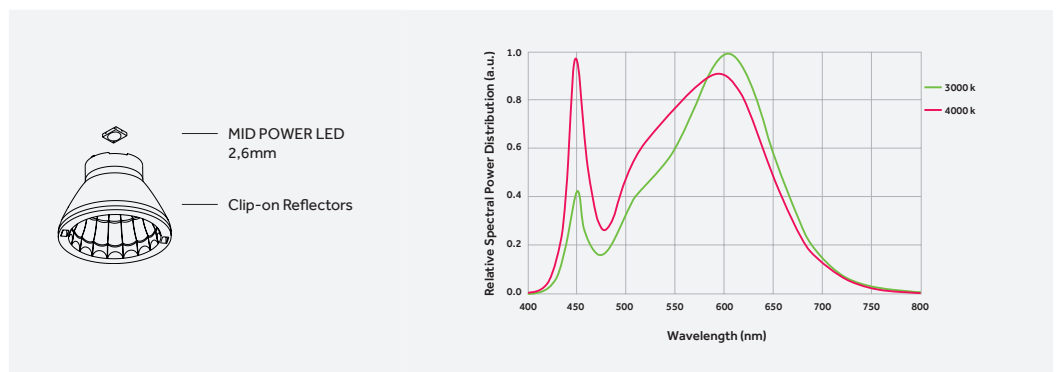
LED ARRAY

MID POWER LED



3000 K, 4000 K
SDCM<3
CRI>80

L70B50=50,000h

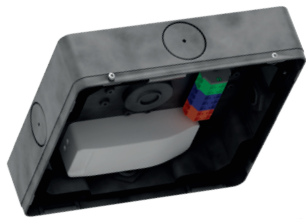


FR MID POWER LED de CELLS se distingue par des performances exceptionnelles dans des dimensions extrêmement compactes. Comme le MID POWER LED est étalonné sur les couleurs chaudes, la consistance de couleur est très élevée dans des conditions d'utilisation typiques de 85 °C. Ses excellentes performances permettent de réaliser des économies d'énergie et de réduire le nombre de LED utilisées.

ES Los LEDs de media potencia (MID POWER LED) de CELLS, increíblemente compactos, garantizan un excepcional rendimiento. El LED de media potencia se regula en los colores cálidos, asegurando una elevada consistencia del color en las condiciones típicas de uso de 85°C. El elevado rendimiento garantiza un gran ahorro de consumo y permite reducir la cantidad de LEDs utilizados.

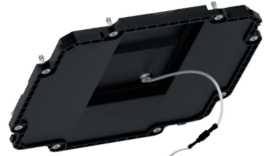
FR Les excellentes performances alliées à la grande flexibilité d'utilisation du produit, ce qui permet de choisir tout un panel de finitions, diffuseurs et configurations optiques, le rendent idéal pour l'éclairage ambiant ou pour des applications spécifiques.

ES El excelente rendimiento y la gran flexibilidad de utilizo del aparato, disponible con diferentes acabados, difusores y configuraciones ópticas, hacen que sea la solución ideal para la iluminación general o para aplicaciones específicas.



IP66 Body/Trim*

FR Corps en aluminium résistant moulé sous pression pour les composants électroniques
ES Cuerpo en aluminio inyectado resistente para los componentes electrónicos

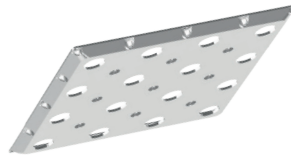


FR Plaque en aluminium abritant la carte LED
ES Placa en aluminio para módulo LED



Plates

FR Plaques colorées en plastique
ES Placas coloradas en plástico



Optics

FR Réflecteurs métallisés dotés de prestations élevées
ES Reflectores metalizados de elevado rendimiento



IK10 Diffuser

FR Diffuseur résistant aux chocs (IK10) et à haute transmittance
ES Difusor resistente al impacto (IK10) y de elevada transmitancia

Surface body



FR Blanc
ES Blanco



FR Graphite
ES Grafito

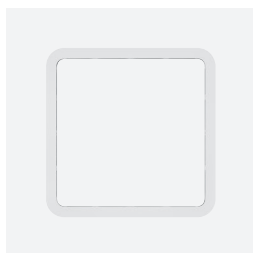


FR Gris
ES Gris

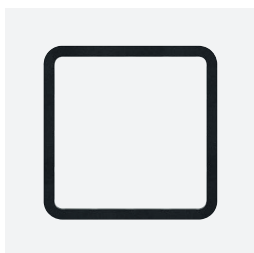


FR Aluminium brut
ES Aluminio bruto

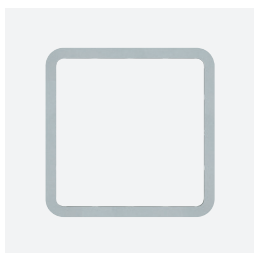
Recessed trim



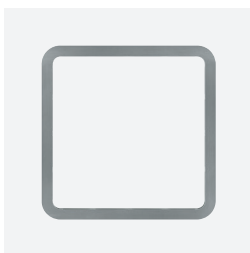
FR Blanc
ES Blanco



FR Graphite
ES Grafito



FR Gris
ES Gris



FR Acier inoxydable
ES Acero inoxidable

Plates



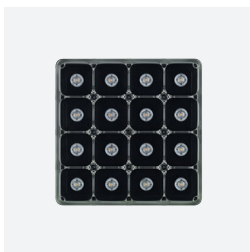
FR Blanc
ES Blanco



FR Chrome
ES Cromado



FR Gris
ES Gris



FR Graphite
ES Grafito



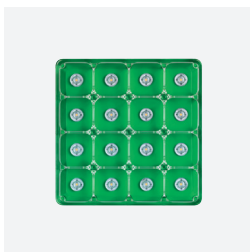
FR Jaune
ES Amarillo



FR Bleu
ES Azul



FR Rouge
ES Rojo



FR Vert
ES Verde

Optics



FR Étroit
ES Estrecho



FR Moyen
ES Medio



FR Large
ES Ancho



FR Très large
ES Muy ancho



FR Rectangulaire
ES Rectangular



FR Asymétrique
ES Asimétrico

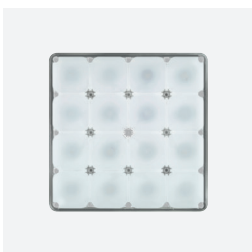


FR Double, asymétrique
ES Doble asimétrico

Diffusers



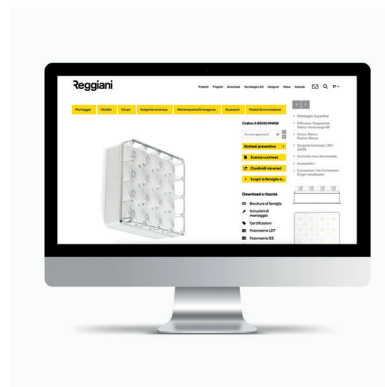
FR Diffuseur transparent
ES Difusor transparente



FR Diffuseur opale
(plaque blanche uniquement)
ES Difusor opalescente
(Solo con placa blanca)

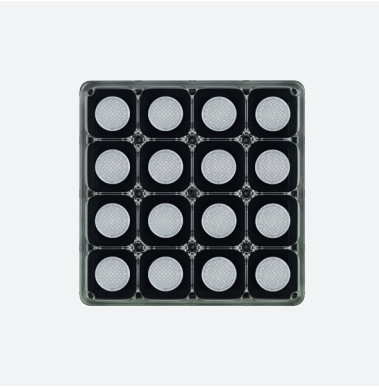


FR Diffuseur résistant aux chocs (IK10)
ES Difusor resistente al impacto (IK10)



FR Configurateur : à découvrir sur
www.reggiani.net
ES Configurador: pruébelo en
www.reggiani.net





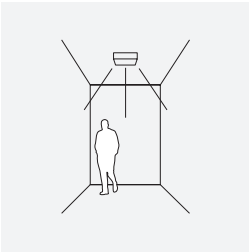
FR Les 16 réflecteurs ou lentilles avec système de fixation clipsable permettent d'obtenir différentes configurations et débouchent sur 8 distributions lumineuses.

Parmi les différentes possibilités offertes, citons les optiques à faisceau étroit, moyen, large, très large, rectangulaire et asymétrique ; il existe également une version double asymétrique issue de la fusion de deux groupes d'optiques asymétriques et une option supplémentaire à faisceau large avec diffuseur opale.

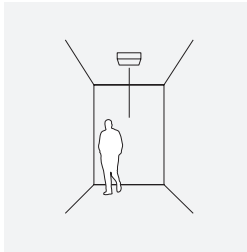
ES Los 16 reflectores o lentes con sistema de fijación clip-on pueden configurarse en diferentes formas y permiten crear 8 distribuciones luminosas.

Se encuentran disponibles varios tipos de ópticas con diferentes haces de luz: estrecho, medio, ancho, muy ancho, rectangular y asimétrico, además del modelo doble asimétrico, creado mediante la combinación de dos grupos de ópticas asimétricas, y del ancho con difusor opalescente.

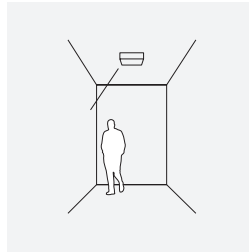
Examples



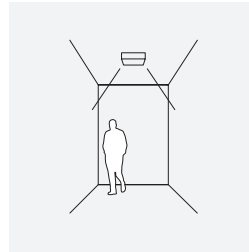
FR Optique : asymétrique, rectangulaire ou très large. Ou Diffuseur : opale
ES Óptica: haz de luz asimétrico, rectangular o muy ancho o Difusor: opalescente.



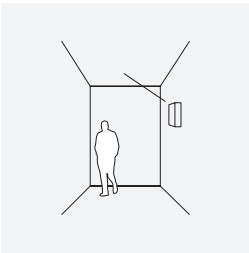
FR Optique: étroit, moyen ou large
ES Óptica: haz de luz estrecho, medio o ancho.



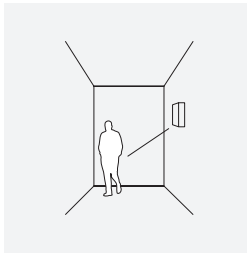
FR Optique : asymétrique
ES Óptica: haz de luz asimétrico.



FR Optique : double, asymétrique
ES Óptica: haz de luz doble asimétrico.



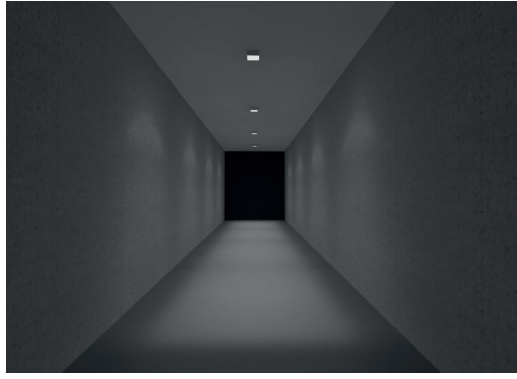
FR Optique : asymétrique
ES Óptica: haz de luz asimétrico.



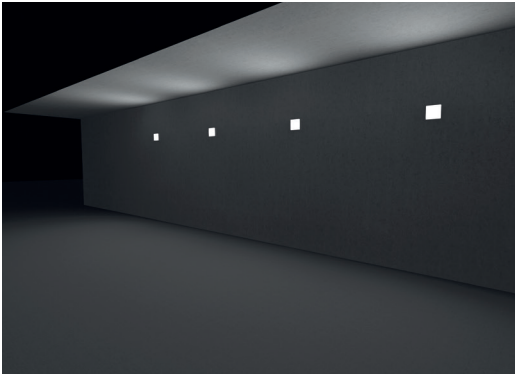
FR Optique : asymétrique
ES Óptica: haz de luz asimétrico.



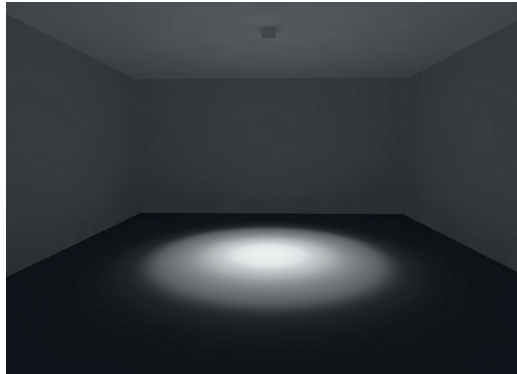
FR Optique : Double, asymétrique
ES Óptica: haz de luz doble asimétrico.



FR Optique : asymétrique, rectangulaire ou très large.
Ou Diffuseur : opale
ES Óptica: haz de luz asimétrico, rectangular o muy ancho o
Difusor: opalescente.



FR Optique : asymétrique
ES Óptica: haz de luz asimétrico.



FR Optique : étroit, moyen ou large
ES Óptica: haz de luz estrecho, medio o ancho.

Cells Recessed

www.reggiani.net

#theilluminationcollective



—

Cells Recessed

Cells Recessed

FR Développé à partir de la version de surface, Cells à encastrer présente le même système avancé de contrôle du faisceau lumineux et permet donc de choisir la solution la mieux adaptée pour l'éclairage général ou pour des applications spécifiques. La gamme propose deux alternatives : avec diffuseur à ras ou diffuseur saillant.

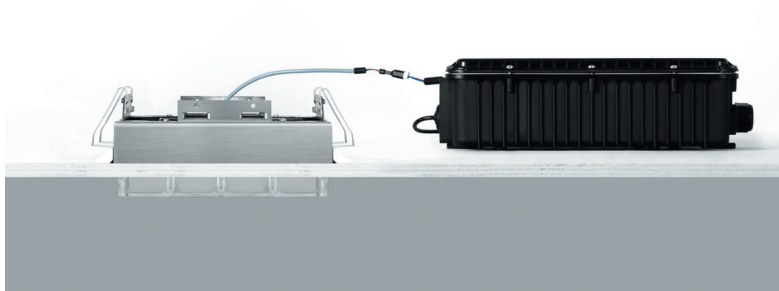
ES A partir del modelo de superficie, se ha desarrollado el modelo Cells de empotrar que dispone del mismo sistema avanzado de control del haz de luz permitiendo, por tanto, seleccionar la mejor solución para la iluminación general o bien para aplicaciones específicas. La serie ofrece dos diferentes soluciones: con difusor a ras o saliente.



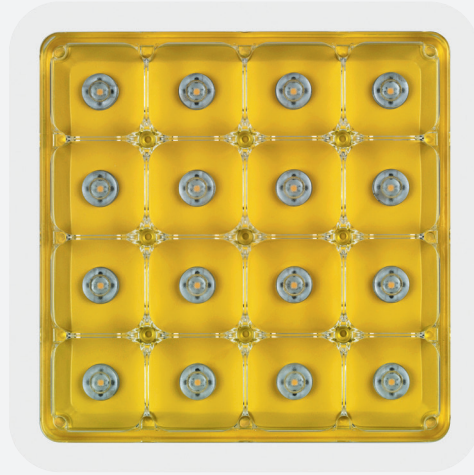
FR Version à ras
ES Modelo a ras



FR Version saillante
ES Modelo saliente

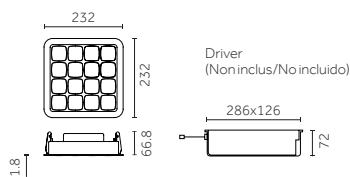


FR Profondeur d'installation limitée à 100 mm.
Boîtier pour driver déporté IP66.
ES Profundidad de instalación de solo 100 mm.
Caja para driver a distancia IP66.



À ras/A ras | Diffuseur transparent/Difusor transparente

Risk 0 1.70 IK10 IP66 850° CE CB EAC



Code example:

X . DG03 B . WW Q 0

Drivers: p.952

Finishes: p.934

Photometric data:

www.reggiani.net

Notes:

Version 13 W : température ambiante jusqu'à 50 °C. / Modelo de 13W: para entornos hasta 50°C
 *Groupe de secours, autonomie 3h. Le produit en fonctionnement de secours émet 30 % du flux émis dans des conditions standard/Modelo con equipo de emergencia y autonomía de 3h. Durante el funcionamiento de emergencia, el producto emite el 30% del flujo emitido en condiciones estándar.

13 W LED ARRAY

Lumen delivered up to 1335 lm / Lumen maintenance: L70 B50=50,000h

Driver	Version	Optics	LED K	CRI	lm	SDCM	Body	Plates
X Not included	DG03	B 9° Narrow	WW 3000	>80	1631	<3	Q	0
		E 24° Medium	NN 4000	>80	1745	<3	R	1
		M 55° Wide	LED nominal lumen				S	2
		O 68° Very wide					J	4
		U - Rectangular						5
		S - Asymmetric						6
		T - Double asymmetric						7
								8

13 W Emergency* LED ARRAY

Lumen delivered up to 1335 lm / Lumen maintenance: L70 B50=50,000h

Driver	Version	Optics	LED K	CRI	lm	SDCM	Body	Plates
X Not included	LG03	B 9° Narrow	WW 3000	>80	1631	<3	Q	0
		E 24° Medium	NN 4000	>80	1745	<3	R	1
		M 55° Wide	LED nominal lumen				S	2
		O 68° Very wide					J	4
		U - Rectangular						5
		S - Asymmetric						6
		T - Double asymmetric						7
								8

18 W LED ARRAY

Lumen delivered up to 1728 lm / Lumen maintenance: L70 B50=50,000h

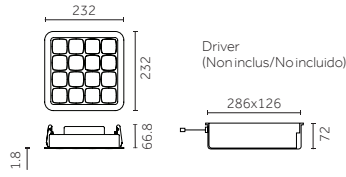
Driver	Version	Optics	LED K	CRI	lm	SDCM	Body	Plates
X Not included	DG04	B 9° Narrow	WW 3000	>80	2150	<3	Q	0
		E 24° Medium	NN 4000	>80	2300	<3	R	1
		M 55° Wide	LED nominal lumen				S	2
		O 68° Very wide					J	4
		U - Rectangular						5
		S - Asymmetric						6
		T - Double asymmetric						7
								8

18 W Emergency* LED ARRAY

Lumen delivered up to 1728 lm / Lumen maintenance: L70 B50=50,000h

Driver	Version	Optics	LED K	CRI	lm	SDCM	Body	Plates
X Not included	LG04	B 9° Narrow	WW 3000	>80	2150	<3	Q	0
		E 24° Medium	NN 4000	>80	2300	<3	R	1
		M 55° Wide	LED nominal lumen				S	2
		O 68° Very wide					J	4
		U - Rectangular						5
		S - Asymmetric						6
		T - Double asymmetric						7
								8

À ras/A ras | Diffuseur opale/Difusor opalescente



Code example:

X . GG03 . 0 . WW 48

13 W LEDARRAY		Lumen delivered up to 845 lm / Lumen maintenance: L70 B50=50,000h									
Driver	Version	Optics	LED	K	CRI	lm	SDCM	Body	Plates		
X Not included	GG03	0 81° Very wide	WW	3000	>80	1631	<3	48	Blanc plate only		
			NN	4000	>80	1745	<3	08			
				LED nominal lumen				28			
								00			

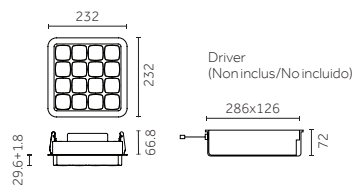
13 W Emergency* LEDARRAY		Lumen delivered up to 845 lm / Lumen maintenance: L70 B50=50,000h									
Driver	Version	Optics	LED	K	CRI	lm	SDCM	Body	Plates		
X Not included	QG03	0 81° Very wide	WW	3000	>80	1631	<3	48	Blanc plate only		
			NN	4000	>80	1745	<3	08			
				LED nominal lumen				28			
								00			

18 W LEDARRAY		Lumen delivered up to 1098 lm / Lumen maintenance: L70 B50=50,000h									
Driver	Version	Optics	LED	K	CRI	lm	SDCM	Body	Plates		
X Not included	GG04	0 81° Very wide	WW	3000	>80	2150	<3	48	Blanc plate only		
			NN	4000	>80	2300	<3	08			
				LED nominal lumen				28			
								00			

18 W Emergency* LEDARRAY		Lumen delivered up to 1098 lm / Lumen maintenance: L70 B50=50,000h									
Driver	Version	Optics	LED	K	CRI	lm	SDCM	Body	Plates		
X Not included	QG04	0 81° Very wide	WW	3000	>80	2150	<3	48	Blanc plate only		
			NN	4000	>80	2300	<3	08			
				LED nominal lumen				28			
								00			

Saillant/Saliente | Diffuseur transparent/Difusor trasparente

Risk 0 1.70 IK10 IP66 850° CE CB EAC



Code example:

X . FG03 B . WW Q 0

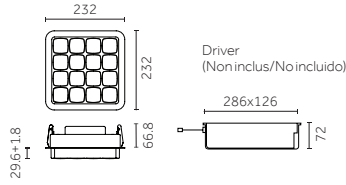
13 W LED ARRAY		Lumen delivered up to 1335 lm / Lumen maintenance: L70 B50=50,000h							
Driver	Version	Optics	LED	K	CRI	lm	SDCM	Body	Plates
X	Not included	FG03	B	9°	Narrow	WW	3000 >80 1631 <3	Q	0
			E	24°	Medium	NN	4000 >80 1745 <3	R	1
			M	55°	Wide	LED nominal lumen		S	2
			O	68°	Very wide			J	4
			U	-	Rectangular				5
			S	-	Asymmetric				6
			T	-	Double asymmetric				7
									8

13 W Emergency* LED ARRAY		Lumen delivered up to 1335 lm / Lumen maintenance: L70 B50=50,000h							
Driver	Version	Optics	LED	K	CRI	lm	SDCM	Body	Plates
X	Not included	PG03	B	9°	Narrow	WW	3000 >80 1631 <3	Q	0
			E	24°	Medium	NN	4000 >80 1745 <3	R	1
			M	55°	Wide	LED nominal lumen		S	2
			O	68°	Very wide			J	4
			U	-	Rectangular				5
			S	-	Asymmetric				6
			T	-	Double asymmetric				7
									8

18 W LED ARRAY		Lumen delivered up to 1728 lm / Lumen maintenance: L70 B50=50,000h							
Driver	Version	Optics	LED	K	CRI	lm	SDCM	Body	Plates
X	Not included	FG04	B	9°	Narrow	WW	3000 >80 2150 <3	Q	0
			E	24°	Medium	NN	4000 >80 2300 <3	R	1
			M	55°	Wide	LED nominal lumen		S	2
			O	68°	Very wide			J	4
			U	-	Rectangular				5
			S	-	Asymmetric				6
			T	-	Double asymmetric				7
									8

18 W Emergency* LED ARRAY		Lumen delivered up to 1728 lm / Lumen maintenance: L70 B50=50,000h							
Driver	Version	Optics	LED	K	CRI	lm	SDCM	Body	Plates
X	Not included	PG04	B	9°	Narrow	WW	3000 >80 2150 <3	Q	0
			E	24°	Medium	NN	4000 >80 2300 <3	R	1
			M	55°	Wide	LED nominal lumen		S	2
			O	68°	Very wide			J	4
			U	-	Rectangular				5
			S	-	Asymmetric				6
			T	-	Double asymmetric				7
									8

Saillant/Saliente | Diffuseur opale/Difusor opalescente



Code example:
X . HG03 . 0 . WW 48

13 W LED ARRAY		Lumen delivered up to 845 lm / Lumen maintenance: L70 B50=50,000h									
Driver	Version	Optics	LED	K	CRI	lm	SDCM	Body	Plates		
X Not included	HG03	0 81° Very wide	WW	3000	>80	1631	<3	48	Blanc plate only		
			NN	4000	>80	1745	<3	08			
								28			
								00			
			LED nominal lumen								

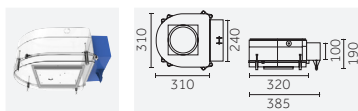
13 W Emergency* LED ARRAY		Lumen delivered up to 845 lm / Lumen maintenance: L70 B50=50,000h									
Driver	Version	Optics	LED	K	CRI	lm	SDCM	Body	Plates		
X Not included	RG03	0 81° Very wide	WW	3000	>80	1631	<3	48	Blanc plate only		
			NN	4000	>80	1745	<3	08			
								28			
								00			
			LED nominal lumen								

18 W LED ARRAY		Lumen delivered up to 1098 lm / Lumen maintenance: L70 B50=50,000h									
Driver	Version	Optics	LED	K	CRI	lm	SDCM	Body	Plates		
X Not included	HG04	0 81° Very wide	WW	3000	>80	2150	<3	48	Blanc plate only		
			NN	4000	>80	2300	<3	08			
								28			
								00			
			LED nominal lumen								

18 W Emergency* LED ARRAY		Lumen delivered up to 1098 lm / Lumen maintenance: L70 B50=50,000h									
Driver	Version	Optics	LED	K	CRI	lm	SDCM	Body	Plates		
X Not included	RG04	0 81° Very wide	WW	3000	>80	2150	<3	48	Blanc plate only		
			NN	4000	>80	2300	<3	08			
								28			
								00			
			LED nominal lumen								

Accessories

Accessoires de montage/ Accesorios de montaje



Description

Coffrage, à installer dans le béton armé et la brique/
Encofrados a instalar en hormigón armado y ladrillos




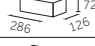
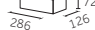
Code

0.26115.0000




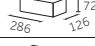
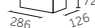
Electrical Devices

Platines d'alimentation/ Drivers




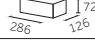
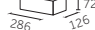
13 W LED ARRAY EMERGENCY

Type	Code	Size (mm)	IP	Tech. specifications	Connectable fixtures
On/Off	0.30034.0000		66	220-240Vac / 50/60Hz	Max: 1
Phase-cut	T.30034.0000		66	220-240Vac / 50/60Hz	Max: 1
Dimm 1-10V	V.30034.0000		66	220-240Vac / 50/60Hz	Max: 1
DALI	D.30034.0000		66	220-240Vac / 50/60Hz	Max: 1
DALI + Bluetooth	H.30034.0000		66	220-240Vac / 50/60Hz	Max: 1



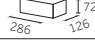

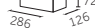
18 W LED ARRAY EMERGENCY

Type	Code	Size (mm)	IP	Tech. specifications	Connectable fixtures
On/Off	0.30036.0000		66	220-240Vac / 50/60Hz	Max: 1
Phase-cut	T.30036.0000		66	220-240Vac / 50/60Hz	Max: 1
Dimm 1-10V	V.30036.0000		66	220-240Vac / 50/60Hz	Max: 1
DALI	D.30036.0000		66	220-240Vac / 50/60Hz	Max: 1
DALI + Bluetooth	H.30036.0000		66	220-240Vac / 50/60Hz	Max: 1

13 W LED ARRAY

Type	Code	Size (mm)	IP	Tech. specifications	Connectable fixtures
On/Off	0.30033.0000		66	220-240Vac / 50/60Hz	Max: 1
Phase-cut	T.30033.0000		66	220-240Vac / 50/60Hz	Max: 1
Dimm 1-10V	V.30033.0000		66	220-240Vac / 50/60Hz	Max: 1
DALI	D.30033.0000		66	220-240Vac / 50/60Hz	Max: 1
DALI + Bluetooth	H.30033.0000		66	220-240Vac / 50/60Hz	Max: 1

18 W LED ARRAY

Type	Code	Size (mm)	IP	Tech. specifications	Connectable fixtures
On/Off	0.30035.0000		66	220-240Vac / 50/60Hz	Max: 1
Phase-cut	T.30035.0000		66	220-240Vac / 50/60Hz	Max: 1
Dimm 1-10V	V.30035.0000		66	220-240Vac / 50/60Hz	Max: 1
DALI	D.30035.0000		66	220-240Vac / 50/60Hz	Max: 1
DALI + Bluetooth	H.30035.0000		66	220-240Vac / 50/60Hz	Max: 1

Notes:

* Groupe de secours, autonomie 3h. Le produit en fonctionnement de secours émet 30% du flux émis dans des conditions standard/

Modelo con equipo de emergencia y autonomía de 3h. Durante el funcionamiento de emergencia, el producto emite el 30% del flujo emitido en condiciones estándar.





—

Cells Surface

Cells Surface

FR Cells Surface est une gamme d'appareils de surface (IK 10, IP66) adaptée à une installation au plafond ou au mur. Son raccord spécifique permet de relier différents produits entre eux afin de réaliser des configurations d'éclairage plus complexes. Disponible dans une vaste gamme de finitions, Cells se prête tout naturellement à l'éclairage d'espaces urbains, de parcours extérieurs, de structures publiques et privées, de parkings extérieurs et souterrains.

ES Cells es una serie de aparatos de superficie, IK 10 e IP66, ideal para la instalación en techos o paredes. Gracias al específico conector, pueden conectarse varios aparatos entre sí, creando soluciones luminotécnicas más complejas. Se suministra en una amplia gama de acabados y es ideal para la iluminación de contextos urbanos, recorridos exteriores, estructuras públicas y privadas y aparcamientos.



FR Installation au plafond
ES Instalación de techo

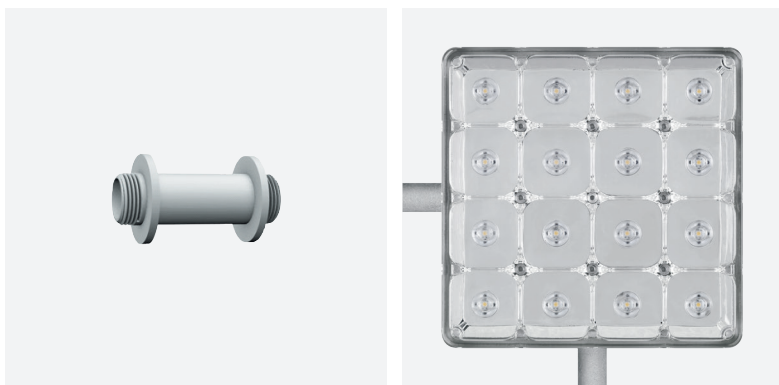


FR Wall installation
ES Instalación de pared



FR Disponible dans les mêmes finitions que le corps de l'appareil, l'accessoire raccord permet de relier plusieurs appareils Cells entre eux, réalisant ainsi des systèmes modulaires flexibles et uniques sur le plan esthétique.

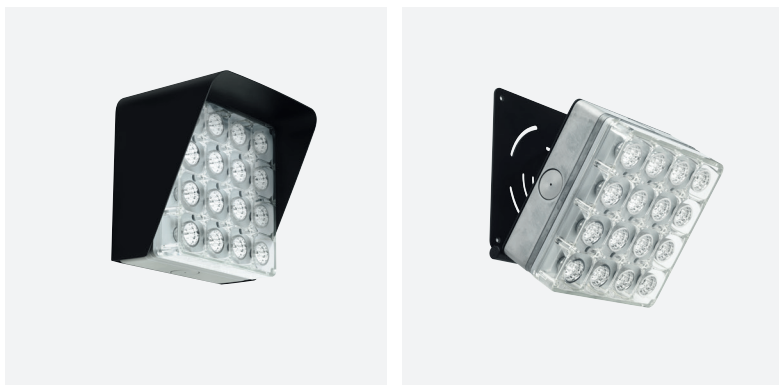
ES El accesorio conector, disponible en los mismos acabados de la base, permite conectar varios aparatos Cells entre sí, creando sistemas modulares flexibles y estéticamente únicos.



FR Raccord
ES Conector

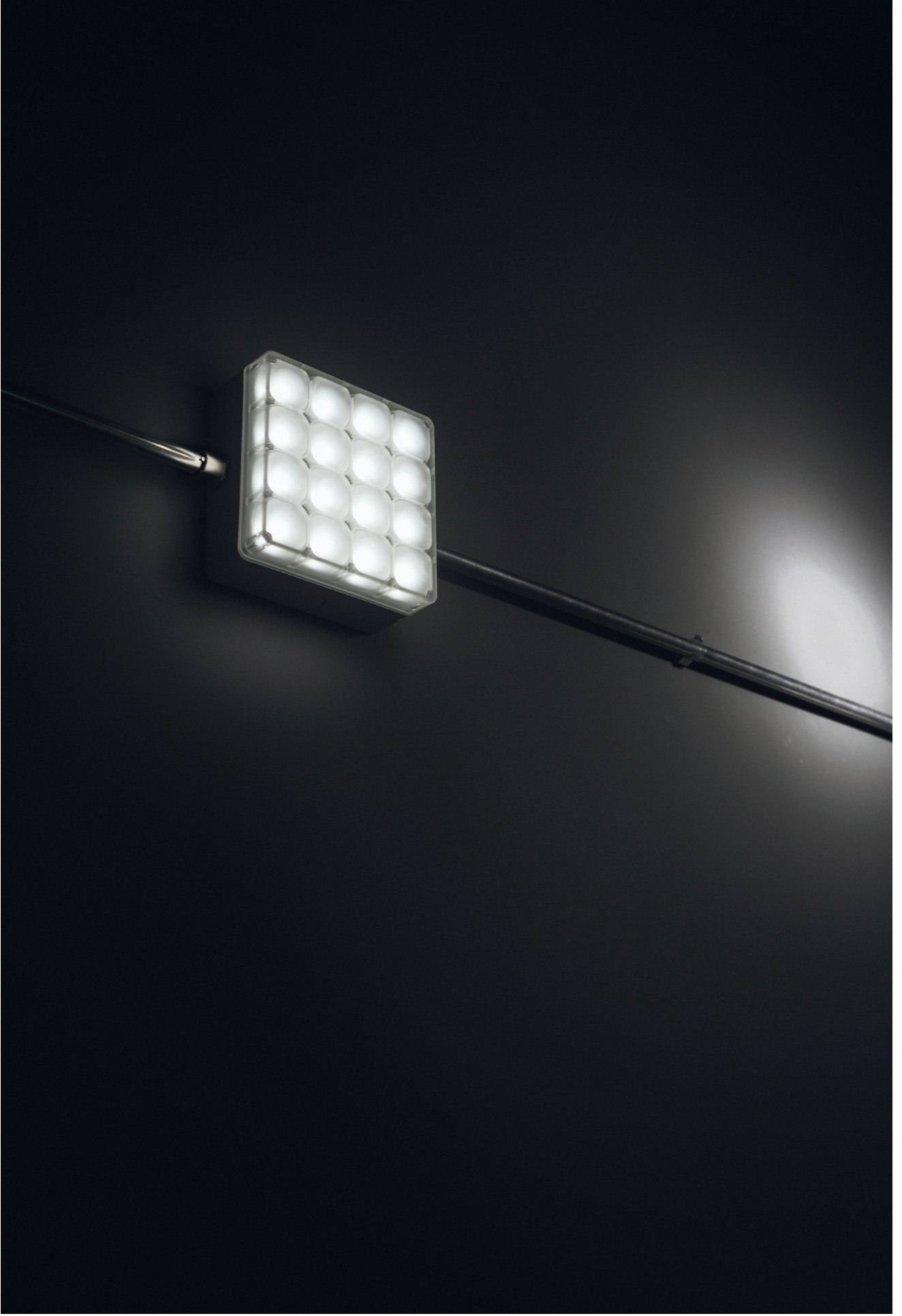
FR Les accessoires anti-éblouissement et les brides orientables augmentent ultérieurement la flexibilité du produit et ses possibilités d'utilisation dans des lieux très divers.

ES Los accesorios antideslumbrantes y los estribos orientables aumentan aún más la flexibilidad del producto y las posibilidades de instalación en diferentes entornos.



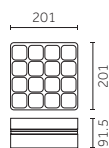
FR Pare-lumière
ES Visera

FR Bride pour l'orientation à 90°
ES Estribo para orientación a 90°



Diffuseur transparent/Difusor transparente

Risk 0 2.10 IK10 IP66 850° CE CB EAC



Code example:

0 . BG03 B . WW Q 0

Accessories: p.962

Finishes: p.934

Photometric data:

www.reggiani.net

Notes:

Version 13 W : température ambiante jusqu'à 50°C. / Modelo de 13W: para entornos hasta 50°C

*Groupe de secours, autonomie 3h. Le produit en fonctionnement de secours émet 30 % du flux émis dans des conditions standard / Modelo con equipo de emergencia y autonomía de 3h. Durante el funcionamiento de emergencia, el producto emite el 30% del flujo emitido en condiciones estándar.

13 W LED ARRAY

Lumen delivered up to 1335 lm / Lumen maintenance: L70 B50=50,000h

Driver	Version	Optics	LED K	CRI	lm	SDCM	Body	Plates
O On/Off	BG03	B 9° Narrow	WW 3000	>80	1631	<3	Q	0
T Phase-cut		E 24° Medium	NN 4000	>80	1745	<3	R	1
V Dimm 1-10V		M 55° Wide	LED nominal lumen		S	2		
D DALI		O 68° Very wide	V	4				
H Bluetooth		U - Rectangular	5					
	S - Asymmetric	6						
	T - Double asymmetric	7						
		8						

13 W Emergency* LED ARRAY

Lumen delivered up to 1335 lm / Lumen maintenance: L70 B50=50,000h

Driver	Version	Optics	LED K	CRI	lm	SDCM	Body	Plates
O On/Off	MG03	B 9° Narrow	WW 3000	>80	1631	<3	Q	0
T Phase-cut		E 24° Medium	NN 4000	>80	1745	<3	R	1
V Dimm 1-10V		M 55° Wide	LED nominal lumen		S	2		
D DALI		O 68° Very wide	V	4				
		U - Rectangular	5					
	S - Asymmetric	6						
	T - Double asymmetric	7						
		8						

18 W LED ARRAY

Lumen delivered up to 1728 lm / Lumen maintenance: L70 B50=50,000h

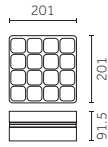
Driver	Version	Optics	LED K	CRI	lm	SDCM	Body	Plates
O On/Off	BG04	B 9° Narrow	WW 3000	>80	2150	<3	Q	0
T Phase-cut		E 24° Medium	NN 4000	>80	2300	<3	R	1
V Dimm 1-10V		M 55° Wide	LED nominal lumen		S	2		
D DALI		O 68° Very wide	V	4				
H Bluetooth		U - Rectangular	5					
	S - Asymmetric	6						
	T - Double asymmetric	7						
		8						

18 W Emergency* LED ARRAY

Lumen delivered up to 1728 lm / Lumen maintenance: L70 B50=50,000h

Driver	Version	Optics	LED K	CRI	lm	SDCM	Body	Plates
O On/Off	MG04	B 9° Narrow	WW 3000	>80	2150	<3	Q	0
T Phase-cut		E 24° Medium	NN 4000	>80	2300	<3	R	1
V Dimm 1-10V		M 55° Wide	LED nominal lumen		S	2		
D DALI		O 68° Very wide	V	4				
		U - Rectangular	5					
	S - Asymmetric	6						
	T - Double asymmetric	7						
		8						

Diffuseur opale/Difusor opalescente



Code example:

0 . CG03 0 . WW 48

13 W LED ARRAY		Lumen delivered up to 845 lm / Lumen maintenance: L70 B50=50,000h						
Driver	Version	Optics	LED K	CRI	lm	SDCM	Body	Plates
0 On/Off	CG03	0 81° Very wide	WW 3000	>80	1631	<3	48	Blanc plate only
T Phase-cut			NN 4000	>80	1745	<3	08	
V Dimm 1-10V			LED nominal lumen				28	
D DALI							98	
Onrequest								
H Bluetooth								

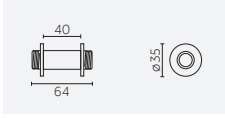
13 W Emergency* LED ARRAY		Lumen delivered up to 845 lm / Lumen maintenance: L70 B50=50,000h						
Driver	Version	Optics	LED K	CRI	lm	SDCM	Body	Plates
0 On/Off	NG03	0 81° Very wide	WW 3000	>80	1631	<3	48	Blanc plate only
T Phase-cut			NN 4000	>80	1745	<3	08	
V Dimm 1-10V			LED nominal lumen				28	
D DALI							98	

18 W LED ARRAY		Lumen delivered up to 1098 lm / Lumen maintenance: L70 B50=50,000h						
Driver	Version	Optics	LED K	CRI	lm	SDCM	Body	Plates
0 On/Off	CG04	0 81° Very wide	WW 3000	>80	2150	<3	48	Blanc plate only
T Phase-cut			NN 4000	>80	2300	<3	08	
V Dimm 1-10V			LED nominal lumen				28	
D DALI							98	
Onrequest								
H Bluetooth								

18 W Emergency* LED ARRAY		Lumen delivered up to 1098 lm / Lumen maintenance: L70 B50=50,000h						
Driver	Version	Optics	LED K	CRI	lm	SDCM	Body	Plates
0 On/Off	NG04	0 81° Very wide	WW 3000	>80	2150	<3	48	Blanc plate only
T Phase-cut			NN 4000	>80	2300	<3	08	
V Dimm 1-10V			LED nominal lumen				28	
D DALI							98	

Accessories

Accessoires de montage/ Accesorios de montaje

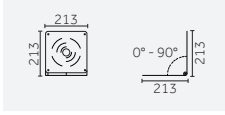

Description

 Raccord/
Conector

Code

0.26030.00

Finishes

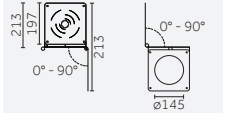
 48
08
28
98

Description

 Bride pour l'orientation à 90°/
Estribo para orientación a 90°

Code

0.26111.00

Finishes

 48
08
28
00

Description

 Bride pour l'orientation biaxiale à 90°/
Estribo para doble orientación a 90°

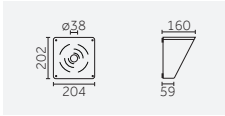
Code

0.26112.00

Finishes

 48
08
28
00

Cells accessories/ Accessoires Cells


Description

 Pare-lumière/
Visera

Code

0.26110.00

Finishes

 48
08
28
00

