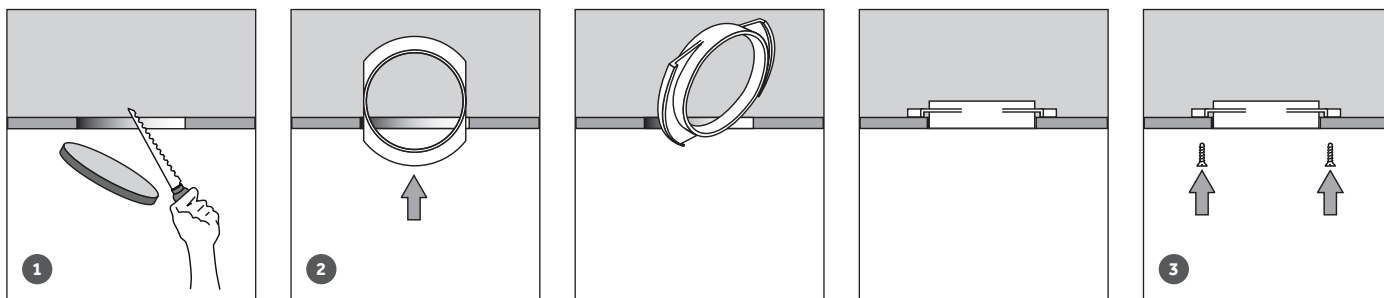
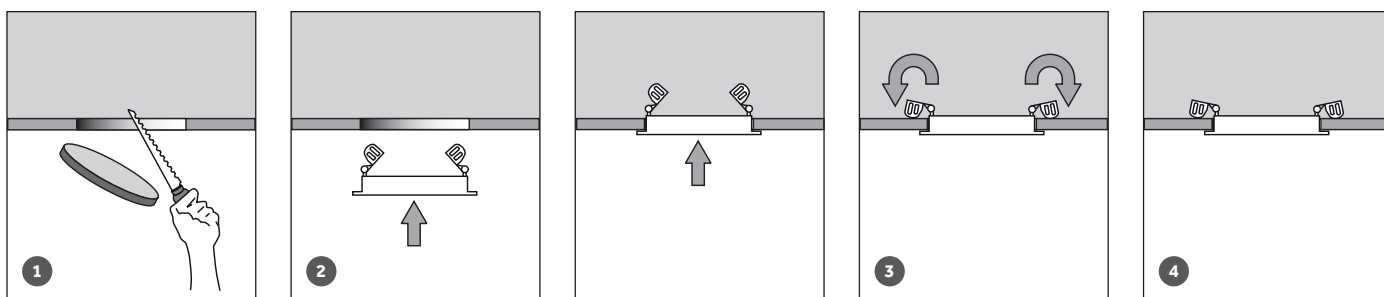


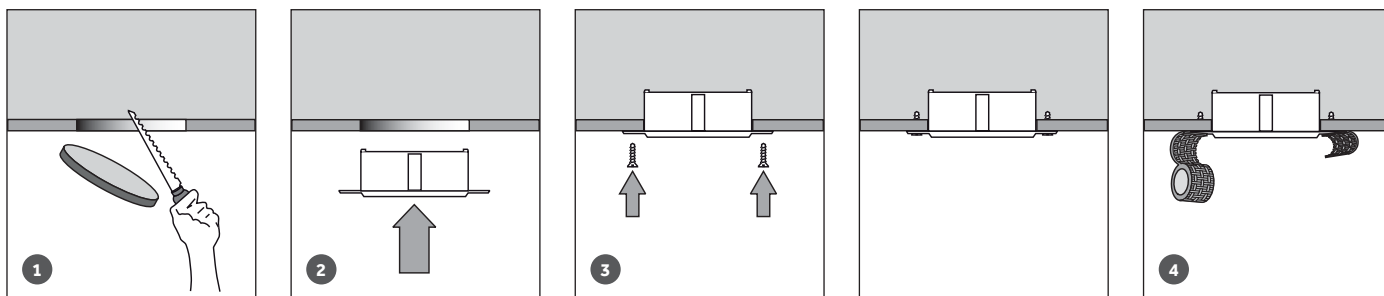
TRIMLESS INSTALLATION



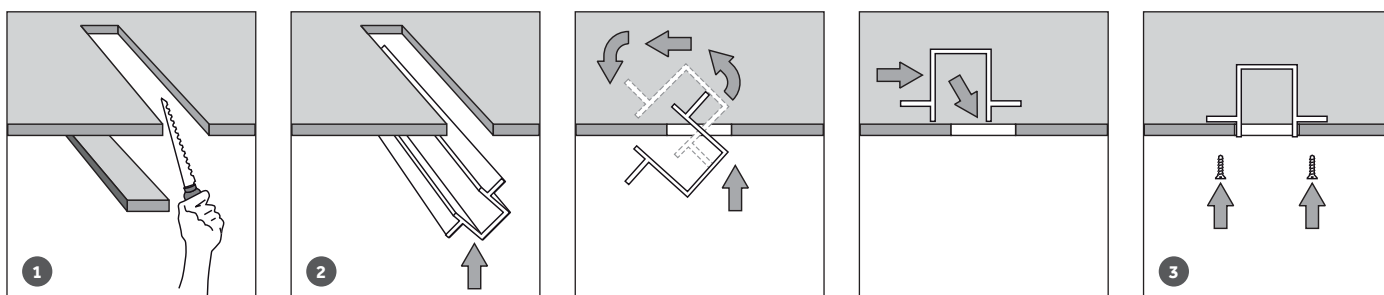
INSTALLATION WITH BEZEL

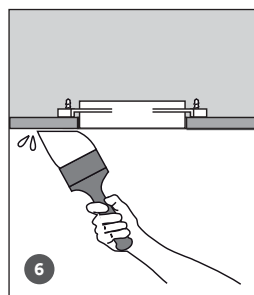
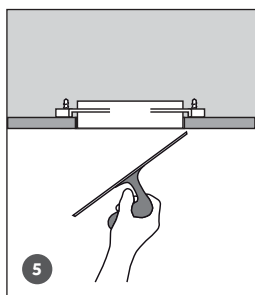
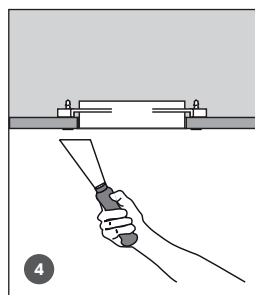


TRIMLESS INSTALLATION (TRYBECA; SPLYT; YORI)

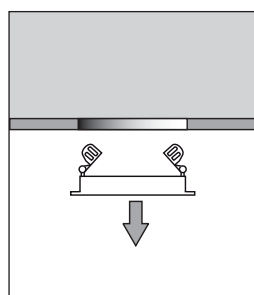
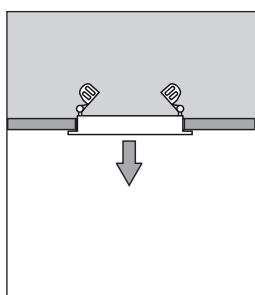
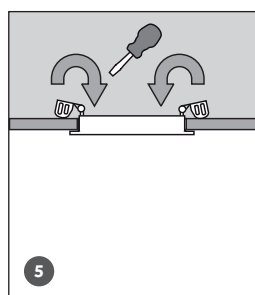


TRIMLESS MOUNTING RAIL INSTALLATION (YORI)

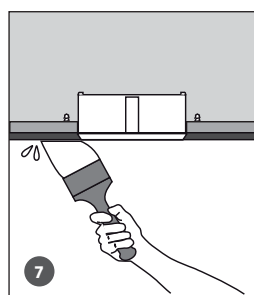
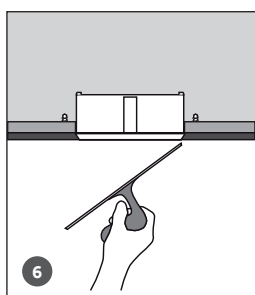
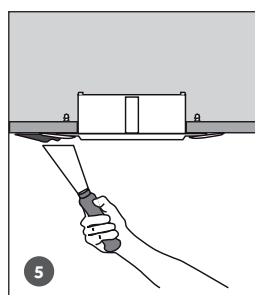




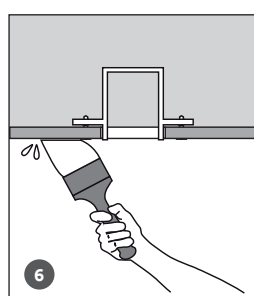
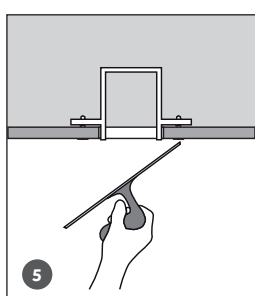
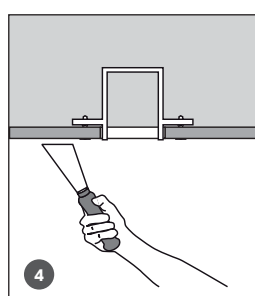
- 1 Cut out hole to the required Ø.
- 2 Insert support.
- 3 Fix support with self-tapping screws.
- 4 Apply plaster/fine mortar.
- 5 Smooth.
- 6 Paint.



- 1 Cut out hole to the required Ø.
- 2 Insert frame into hole.
- 3 Fix frame to the cut-out using KlikFix clips.
- 4 To remove frame.
- 5 Use a flathead screwdriver to lift up the KlikFix clips.



- 1 Cut out hole to the required Ø.
- 2 Insert support.
- 3 Fix support with self-tapping screws.
- 4 Apply fibreglass adhesive tape to the outer edge of the frame.
- 5 Apply plaster/fine mortar.
- 6 Smooth.
- 7 Paint.



- 1 Cut out hole to the required Ø.
- 2 Insert support.
- 3 Fix support with self-tapping screws.
- 4 Apply plaster/fine mortar.
- 5 Smooth.
- 6 Paint.